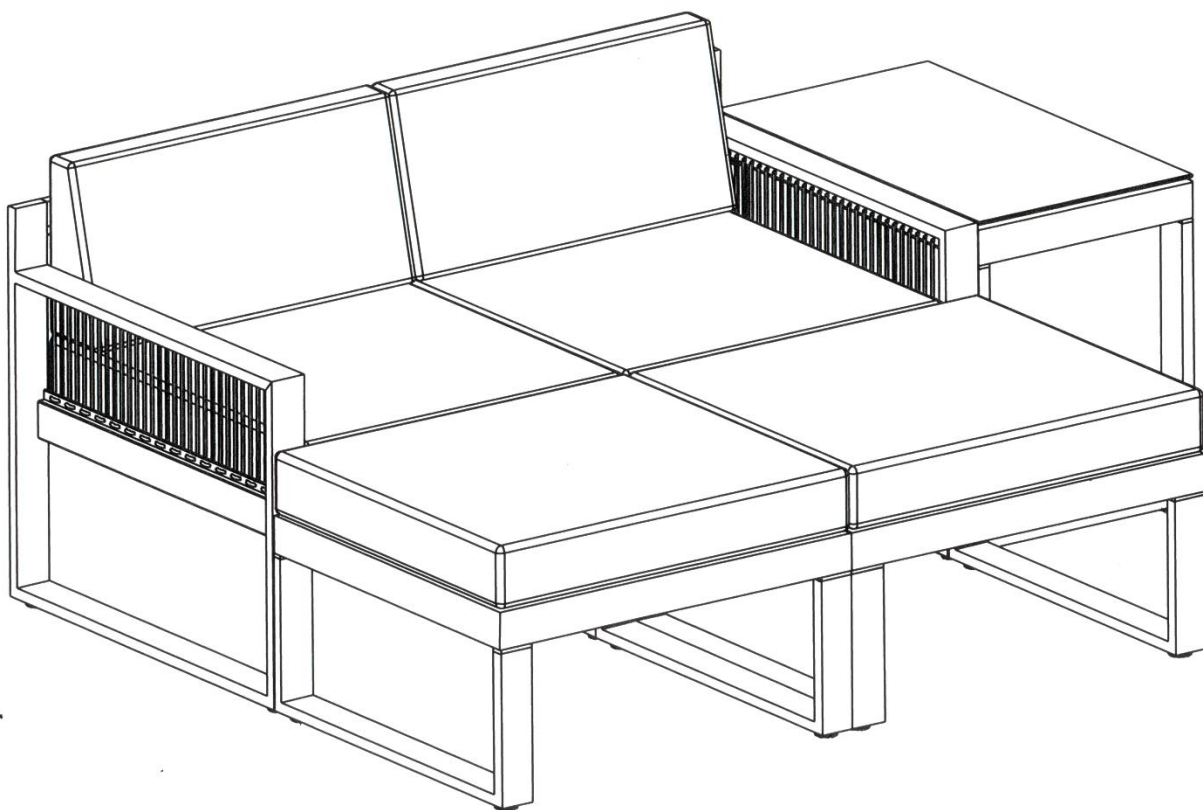


INSTRUCTION MANUAL

PRODUCT: ARCADIA BALCONY 5 PC SETTING

ITEM CODE: 17ARCB2SW

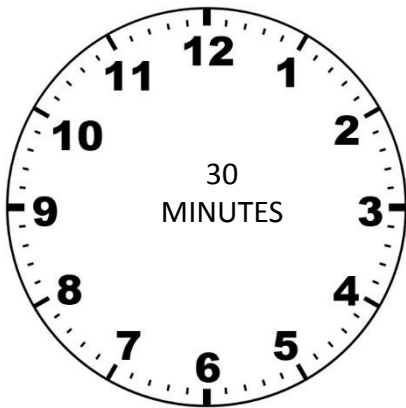
MADE IN CHINA



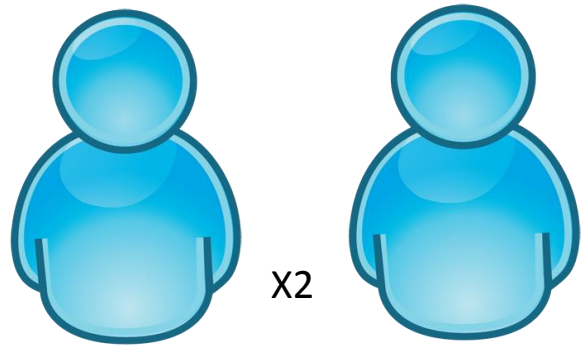
PRE-ASSEMBLY PREPARATION

Before you start:

1. Choose a clean, level, spacious assembly area. Avoid hard surfaces that may damage the product
2. Take care when lifting. Product should be assembled as near as possible to the point of use
3. Ensure that you have all required contents for complete assembly
4. Always read the assembly instructions carefully before beginning assembly.
5. Keep all hardware parts and packaging out of reach of small children.
6. Do not over tighten the screws and bolts as this may damage the threads



ALLOW TIME



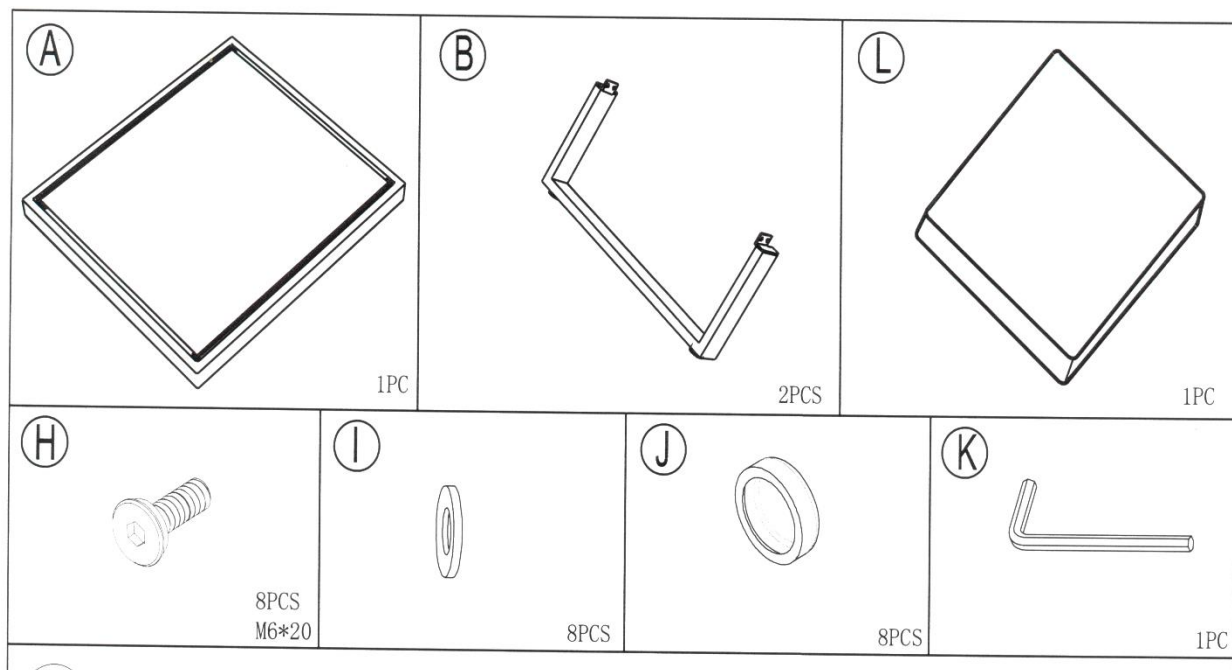
PEOPLE REQUIRED

Notice:

Ottoman & Side Table require Assembly.

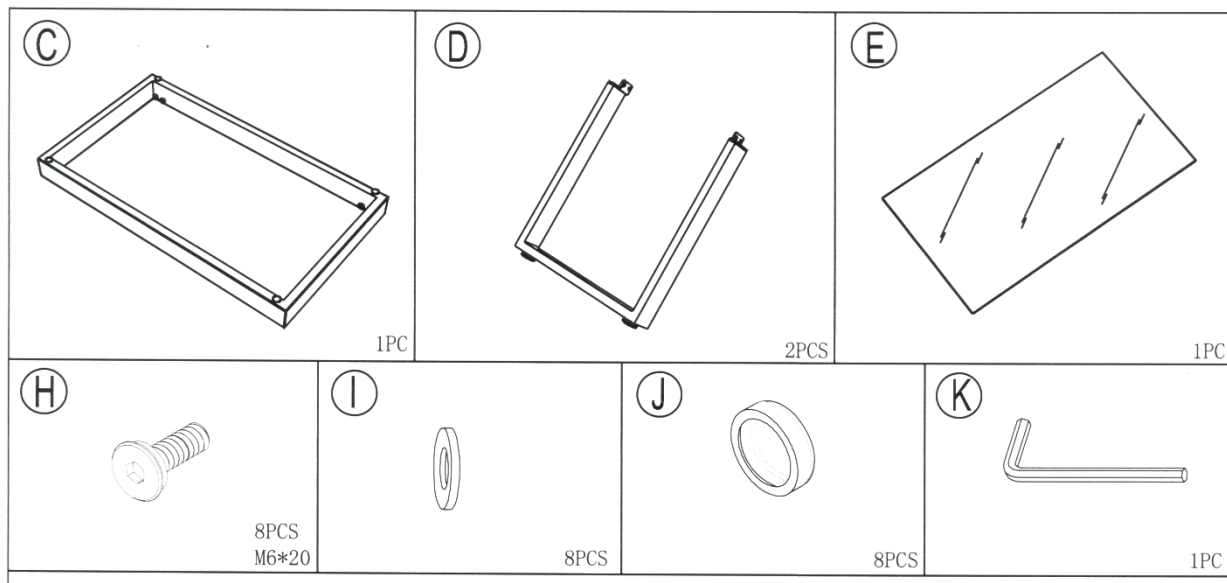
For any assistance with assembly or missing parts please contact:
Place of purchase or Furniture Solutions on below
Customer Service (Australia) Phone– 1300794 188
Email– customerservice@furnitureolutions.com.au

PARTS LIST OTTOMAN



	Code	Description	QTY
A	FAJ18128-1.OR	Ottoman Rim	2
B	FAJ18128-1.OL	Ottoman Leg	4
L	FAJ18128-1.OC	Ottoman Cushion	2
H	FAJ18128-1.HW	Bolt M6*20mm	16
I	FAJ18128-1.HW	Washer M6	16
J	FAJ18128-1.HW	Cover Cap	16
K	FAJ18128-1.HW	Tool	1

PARTS LIST SIDE TABLE



	Code	Description	QTY
C	FAJ18128-1.SR	Side Table Rim	1
B	FAJ18128-1.SL	Side Table Leg	2
L	FAJ18128-1.SG	Glass Panel	1
H	FAJ18128-1.HW	Bolt M6*20mm	8
I	FAJ18128-1.HW	Washer M6	8
J	FAJ18128-1.HW	Cover Cap	8
K	FAJ18128-1.HW	Tool	1

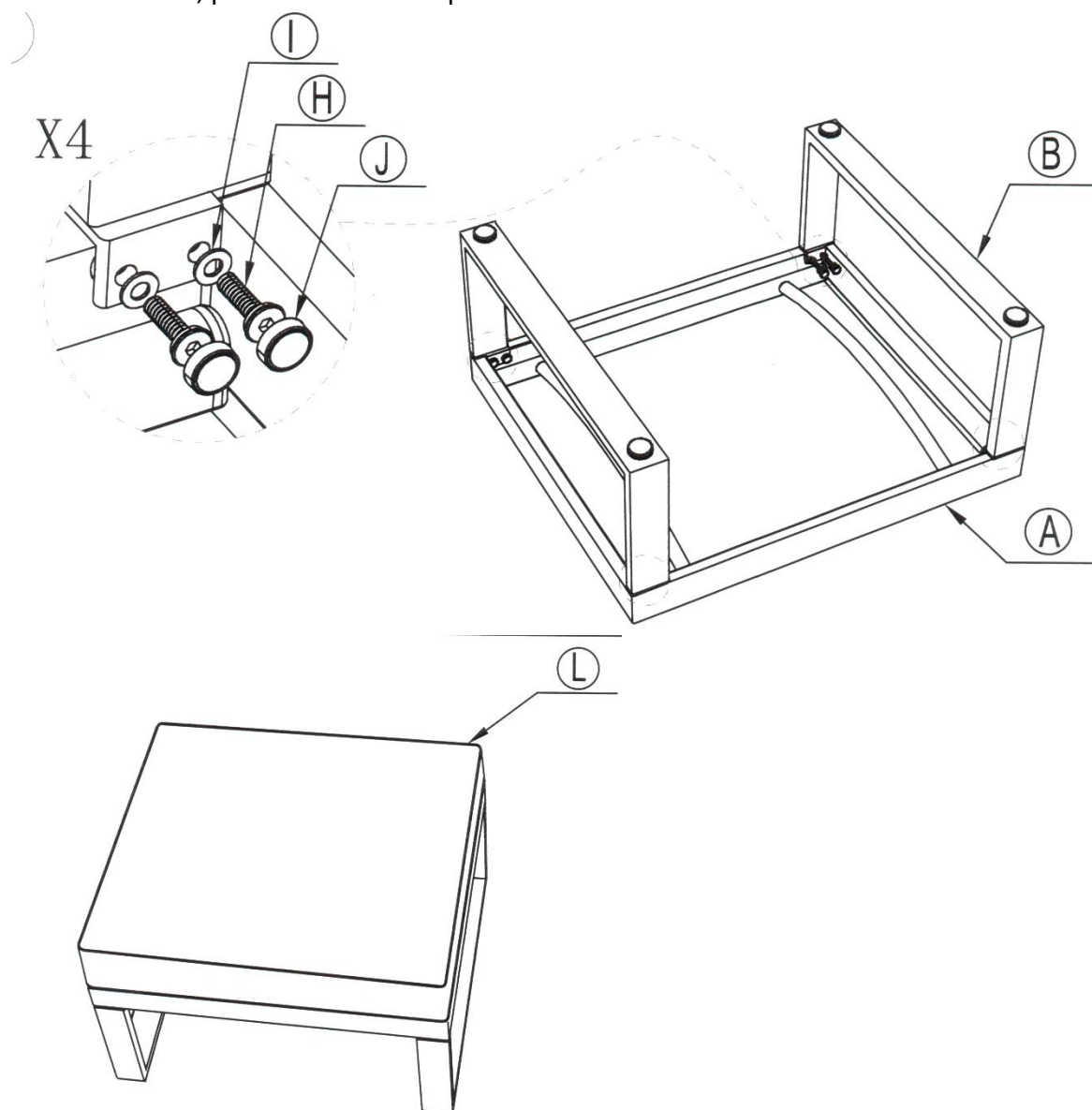
ASSEMBLY INSTRUCTIONS

OTTOMAN

ASSEMBLY

Please follow pre-assembly instruction on page.2.

As indicated by diagram below place ottoman rim [A] upside down, locate the predrilled holes in both ottoman leg [B] and ottoman rim. Aline leg holes with rim holes, while a second person holds leg in position, take bolt [H] together with washer [I], insert thru hole and by hand seat the thread correctly by turning 2-3 times and pull back to ensure bolt has gripped. Do not tighten yet. Repeat for second hole of leg. Now go to opposite side of leg and repeat same process. Now take tool [K] and tighten all four (4) bolts. Note do not over tighten as you may cause damage to threads. Then repeat process again for the other leg. Assembly complete. Please pick up item and stand on its feet, place cushion on top



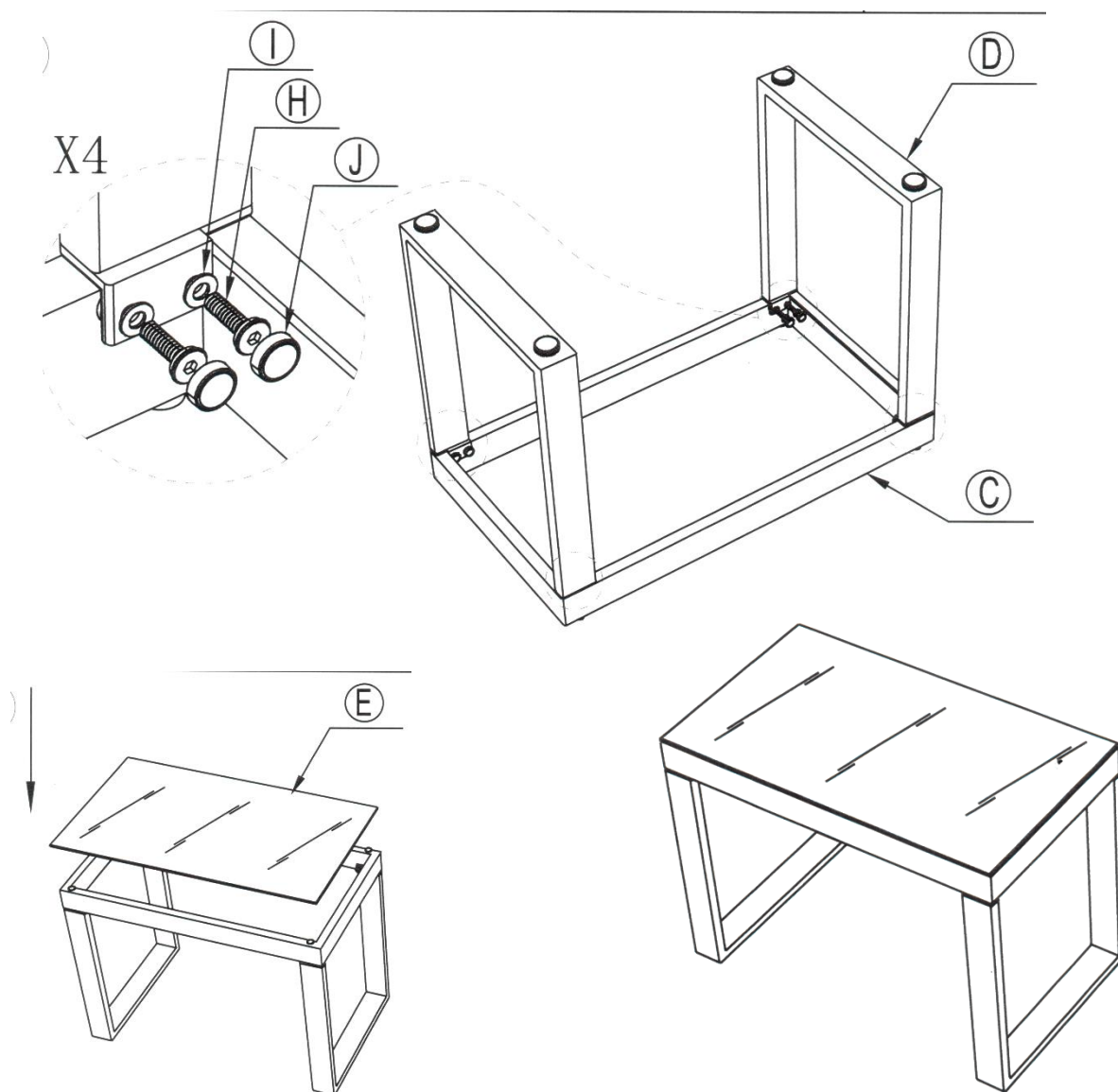
ASSEMBLY INSTRUCTIONS

SIDE TABLE

ASSEMBLY

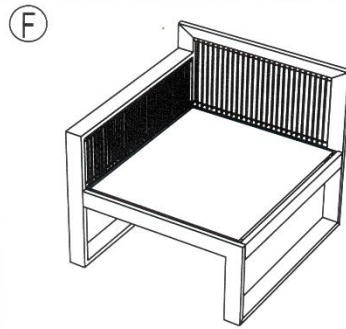
Please follow pre-assembly instruction on page.2.

As indicated by diagram below place side table rim [c] upside down, locate the predrilled holes in both side table leg [D] and side table rim. Aline leg holes with rim holes, while a second person holds leg in position, take bolt [H] together with washer [I], insert thru hole and by hand seat the thread correctly by turning 2-3 times and pull back to ensure bolt has gripped. Do not tighten yet. Repeat for second hole of leg. Now go to opposite side of leg and repeat same process. Now take tool [K] and tighten all four (4) bolts. Note do not over tighten as you may cause damage to threads. Then repeat process again for the other leg. Assembly complete. Please pick up item and stand on its feet, place glass panel [E] as indicated in diagram,

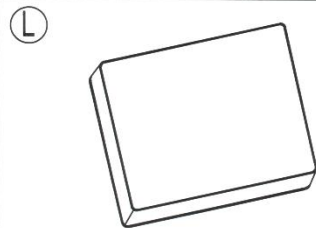


COMPONENTS LIST

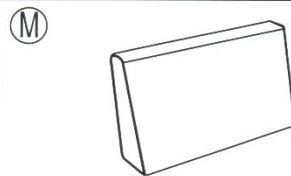
Left Hand Facing
Chair frame
Code: FAJ18128-1.LF



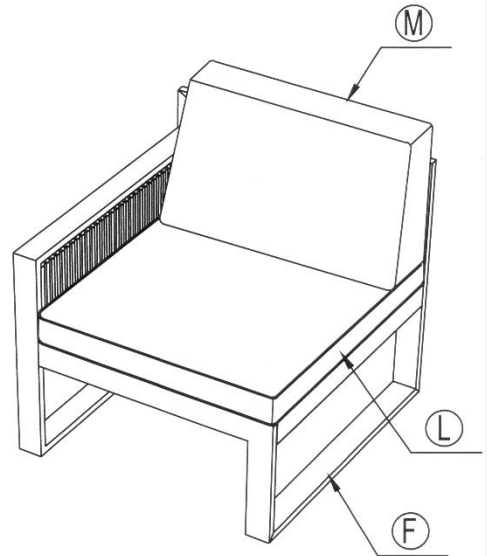
Chair Seat Cushion
Code: FAJ18128-1.SC



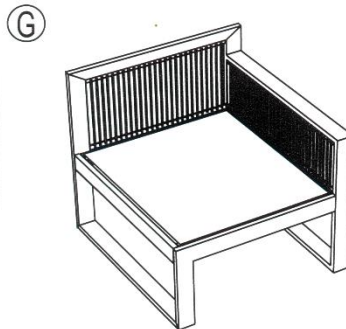
Chair Seat Cushion
Code: FAJ18128-1.BC



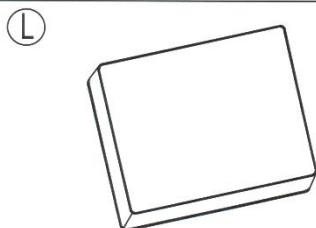
1



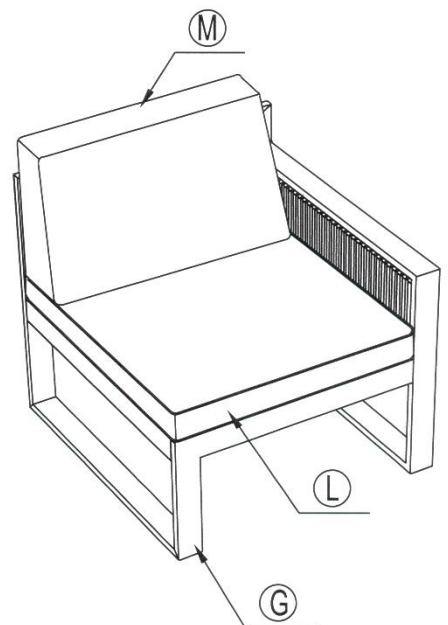
Left Hand Facing
Chair frame
Code: FAJ18128-1.RF



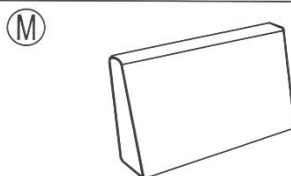
Chair Seat Cushion
Code: FAJ18128-1.SC



1

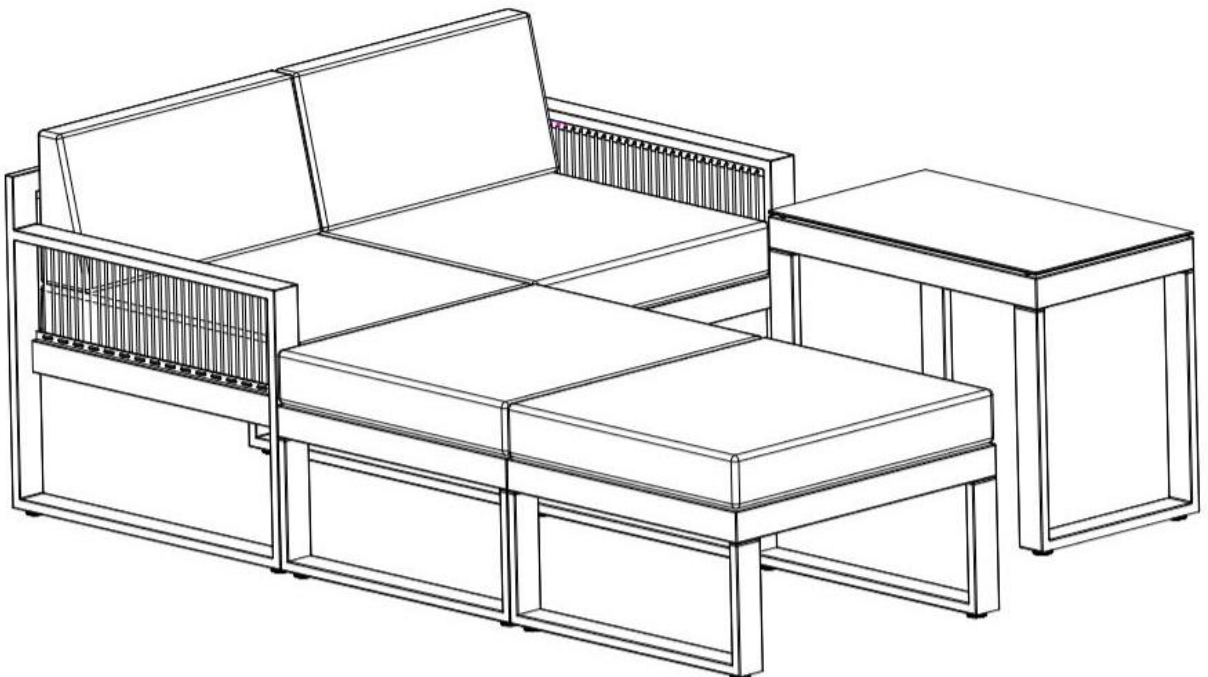
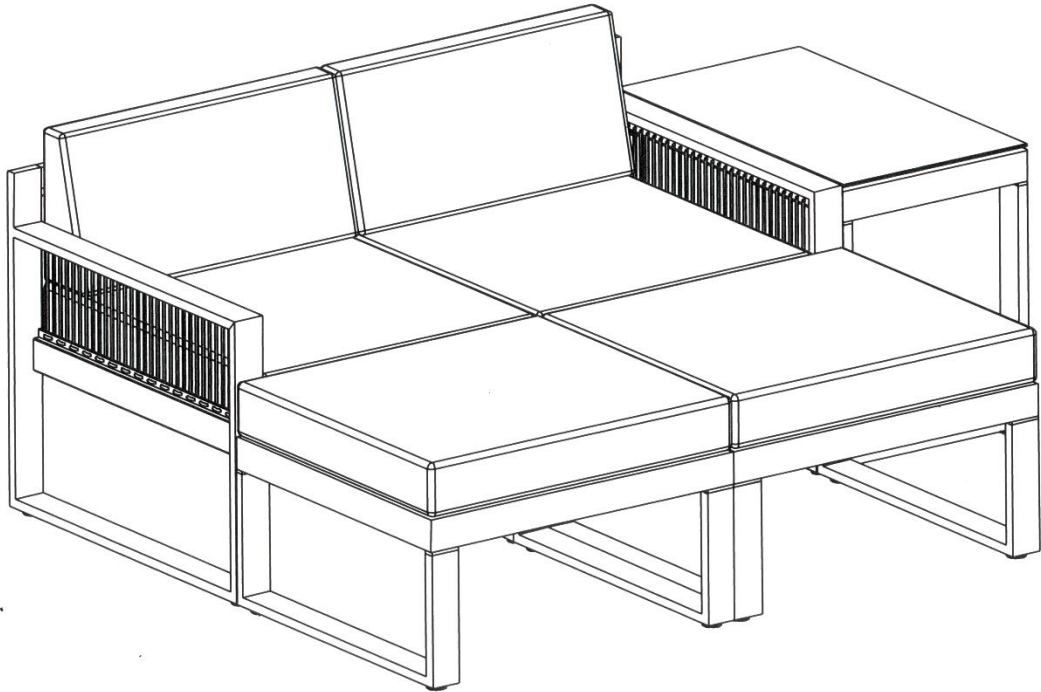


Chair Seat Cushion
Code: FAJ18128-1.BC



CONFIGURATION

Please note due to modular nature of this product you have the ability to arrange to suit please see a couple of examples below



PRODUCT CARE & MAINTENANCE

Fabric Information

Fabrics used in outdoor product are not made of any special type of material; they do however use blends of common materials such as polyester, olefin & acrylic which perform best for intended purpose. These fabrics are not impervious to fading or mould, ensure cushions are always dry and put away when not in use.

Fabric Maintenance

It is important to keep fabric free of dust and or debris. Please vacuum at least every 2-3 weeks. Spot cleaning warm water & soft soap solution, sponge onto affected area till clean rinse area with clean sponge, pat dry with a soft clean cloth. Stubborn stains may be removed with fabric cleaner or if available steam cleaning is ok providing covers are left on filling and on gentle setting. Note do not use solvents, do not machine wash, do not tumble dry.

Textilene Sling Information

The Textilene sling is a synthetic material made from a mixture of fibres of polyester covered with a sheath of PVC, able to withstand compressive stresses, strains, atmospheric agents and UV rays.

For Outside use properties of material have a proven track record, while still subject to fading strength will remain even after colour starts to fade. Shelf life again depends on location & environment, regular cleaning & storage for best results for longevity.

Textilene Sling Maintenance

Use a bucket filled with warm water & a soft soap, sponge over frame till clean, once clean rinse off with a hose, pat dry with a soft clean cloth before use. Every 4-6 weeks. Ensure not left wet for long periods of time to avoid mould build up.

PRODUCT CARE & MAINTENANCE

Glass Maintenance

Glass used is tempered for your safety; best results are to use placemats & coasters to avoid scratching surface. Keep dust free, with floating glass please lift and clean underside of glass with a soft clean cloth. Use of normal glass cleaning product is permissible but please rinse surrounding areas with clean water to avoid damage to wicker or paint on aluminium frame.

Aluminium Frame Information

The majority of frames are mainly produced from aluminium, with the main benefit being a light weight product for easier use. Some designs require steel to be used in certain sections for added strength. While aluminium is rust resistant, bare metal can show signs of oxidation (red film) this does not constitute rust. Simply you are able to wipe or sand surface to remove oxidation mark.

Note you will need to touch up affected area with paint to stop from reoccurring. Steel itself has a lower resistance to elements than aluminium and will show signs of rust as it ages. Limited exposure & maintenance are best solutions for adding life to any furniture used in outside areas.

Aluminium Frame Maintenance

Use a bucket filled with warm water & a soft soap, sponge over frame till clean, once clean rinse off with a hose, pat dry with a soft clean cloth before use. Every 4-6 weeks.

Note when cleaning if you find scratches in paint please cover with a paint to prevent oxidation.

WARNING SAFETY & ADVICE

Please be aware materials used in your furniture are not impervious to neglect, acts of god, abuse, alcohol spills, improper use of chemicals such as bleach or any solvent based product, products are limited in design for residential use only and not suitable for commercial use.

Please be aware that heat generated from barbeques and heaters will have an adverse effect on your furniture do not place furniture in close proximity to heat sources.

When moving tables, chairs, sofas or bench's always lift off the floor never drag. Most tables would require a 2 person lift doing so benefits yourself and furniture as dragging may cause damage to furniture and or surface on flooring.

Do not stand on furniture for your own safety & for the sake of the furniture

Never strike glass

Never drag or lean back chair, sofa, benchers whilst sitting on them

Tables, chairs, sofas & benches are not work benchers please only use as intended.

Fitting; bolts, nuts & screws should be checked periodically to ensure they are still firm.

Note do not over tighten.

Please secure furniture during in climatic weather, as lightweight aluminium can become a projectile

Please be aware of staining fabric; Suntan oil, alcohol, juices & other chemical may do permanent damage to your covering, should be cleaned immediately

General wear & tear on cushions, please rotate cushions were possible as filling will soften with use, replacement cushion fillings can be purchased from local upholster if required in future.

General wear & tear fabrics, most synthetic fabric resist pilling but pilling can occur from transference from other fabric that come in contact with material IE: Cotton clothing & or towels.

Do not allow children to play under tables

In summary outdoor furniture products require care to provide you with many years of use. Best results are to combine maintenance and protection from environment + the use of an outdoor cover can give you better result with least amount of effort.

1 Year Warranty

A one (1) year warranty applies to product against any defect associated with faulty workmanship for a period of (1) year from date of purchase.

Furniture Solutions accepts no responsibility for defects caused by incorrect assembly, mishandling, acts of god, general wear & tear, stains from spills/vegetation, chipping/scratching, exposure to extreme heat/cold, mould/mildew, hardware corrosion, misuse of the products & defects caused by failure in duty of care for the product in accordance with the care instructions. Warranty only extends to original purchaser and is not transferable, except when given as a gift.

Duty of care:

While every attempt is made to supply product using quality components there is always a need from consumer to help ensure a long life of use for product.

*Proper use of item, only what it is designed to do.

*Regular maintenance and cleaning.

*Protecting product from the harsh environment: Pollution, mould, heat.

To extend the life of your outdoor furniture we recommend that furniture covers should be used on furniture which is used in areas not protected from elements. Caution should be used when using oils, lotions & other chemicals such as chlorine.

Instruction Manual – Have been written to suit individual materials used in construction, please retain for future use for duty of care, assembly, parts & component sizing.

Claim management:

To make a warranty claim, customers can either contact the retailer where the purchase was made or Furniture Solutions on contact details below. Proof of purchase will be required before proceeding with any claim. In the case of product defects providing photos may be able to speed up processing of the claim. If missing parts please refer to assembly instructions for identification of said part and contact either of the above.

“Our goods come with guarantees that cannot be excluded under the Australian Consumer Law. You are entitled to a replacement or refund for a major failure and for compensation for any other reasonably foreseeable loss or damage. You are also entitled to have the goods repaired or replaced if the goods fail to be of acceptable quality and the failure does not amount to a major failure”.